

# Product Data Sheet

## Balcony and Terrace Channel BTR

Order No. 4771



Slotted drainage channel made of stainless steel with visually appealing grill for installation in front of thresholds or along facades.



### Technical Data

#### Balcony and Terrace Channel BTR

visually appealing grill; channel body with lateral slots; easy connection due to plug-in joints. Joints need to be removed if not in use.

6 adjusting screws allow for vertical adjustment of 15 mm.

Material:	Stainless steel
Total width:	ca. 107 mm
Width channel lid:	ca. 100 mm
Height:	ca. 40–55 mm
Length:	ca. 1 m

#### Accessories:

Pre-fabricated 90°-corners, incl. vertical adjustment	Order No. 4775
Leg length (outer side):	ca. 220 mm x 220 mm

End piece to be inserted into the BTR channel:	Order No. 4773
--	----------------

Terrace Grill in visual appearance of the BTR-channel	Order No. 4474
vertically adjustable with oblong holes (ca. 39 x 8 mm)	

Material:	Stainless steel
Outer dimension:	ca. 40 x 40 cm
Aperture dimension:	ca. 34 x 34 cm
Adjustment range:	ca. 65–95 mm

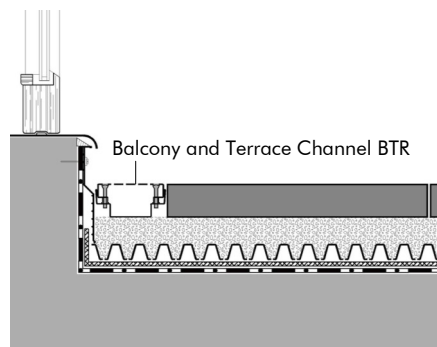
The BTR Channel is available in special lengths upon request.

### Features

- easy vertical adjustment with adjustment screws in the grill
- direct installation in bulk material possible
- collects and drains facade water effectively
- used for low connection constructions in threshold and terrace applications
- visually appealing design
- quick and easy installation due to plug-in joints
- lockable cover
- also usable in combination with concrete slabs on Elefee<sup>®</sup> pedestals

### Application Example

#### "Terrace Surface on Floradrain<sup>®</sup> FD 25"



Concrete slabs in gravel bed  
Floradrain<sup>®</sup> FD 25  
Protection Mat ISM 50  
Roof construction with waterproofing

### Specification Suggestion

Balcony and terrace channel made of stainless steel; vertical adjustment range from ca. 40 mm up to 55 mm, slotted and lockable cover, channel body with lateral slots, delivery and installation according to manufacturer's instructions, including butt joint connector, width

ca. 107 mm, height ca. 40–55 mm, length ca. 1 m.

Make: ZinCo Balcony and Terrace Channel BTR  
Enquiries: ZinCo Green Roof Systems Ltd.  
Phone: +44 (0)1993 229 700