



Aerial view of the FiftyTwoDegrees Business Innovation Centre in Nijmegen.

### Project Data

Area: ca. 8.000 m<sup>2</sup>  
 Construction Year: 2006  
 Architect/Design:  
 Mecanoo architecten, Delft  
 Contractor:  
 Van der Tol b.v., Amsterdam  
 System Build-up:  
 "Lawn" with Floradrain® FD 40-E  
 Note:  
 10° roof slope  
 Coordinates:  
 51°49'29.60"N 5°49'31.13"E

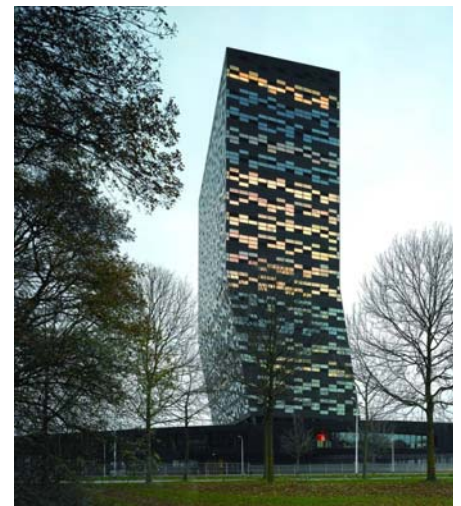
### Conception

The FiftyTwoDegrees Business Innovation Centre is an international, contemporary and future orientated international work geared for innovative companies and institutions in Nijmegen. The geographical location at latitude 52° has given the building it's name.

The tower stands on a green slope and is fluidly yet excitingly absorbed into surrounding Goffert Park. Under the grassed roof, which looks like a hill, are parking

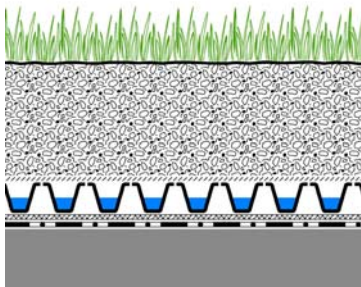
spaces, various commercial facilities and a plaza, partially covered with glass, with shops and restaurants.

The green roof is rising steadily from the ground level to the office tower. An intensive green roof system build-up with Floradrain® FD 40-E and the System Substrate "Lawn", at a depth of at least 200 mm was installed. Pre-cultivated lawn was spread evenly to receive an immediate finished look.

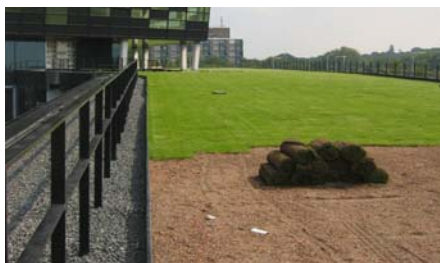


The kink in the construction is the hallmark of FiftyTwoDegrees.

### System Build-up



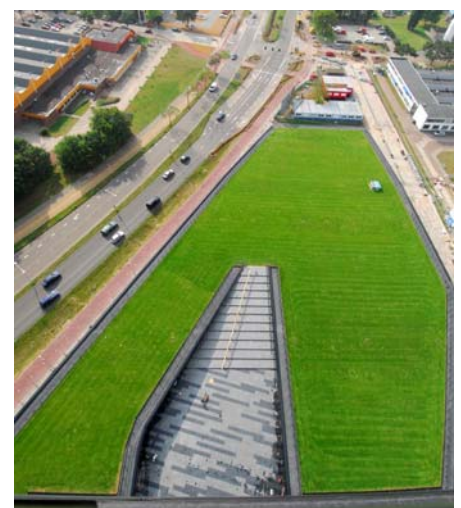
- Pre-cultivated "Lawn"
- System Substrate "Lawn"
- Filter Sheet SF
- Floradrain FD® 40-E
- Protection Mat SSM 45
- Roof construction with root resistant waterproofing



Pre-cultivated lawn was spread evenly to receive an immediate finished look.



The green roof is rising steadily from the ground level during the office tower.



Automatic irrigation was installed to provide regular water supply for the entire roof area.