

# Project Report

Office Building, Somerville, MA



The rooftop offers spectacular views of the Mystic River.

## Project Data

Area: 930 m<sup>2</sup>

Construction Year: 2016

Contractor:  
Recover Green Roofs, Somerville, MA

System Build-up:  
"Heather with Lavender" with  
Floradrain® FD 40-E

Coordinates:  
42°23'44.38"N 71° 4'43.64"W

## Conception

Avigilon, Canadian provider of video surveillance software and equipment and security solutions, opened a new research and development centre in Somerville, located near Boston's Technology Hub in 2016. The building is situated amidst an award-winning mixed-use area on the Mystic River and offers the occupants great views of the waterfront. Nine sepa-

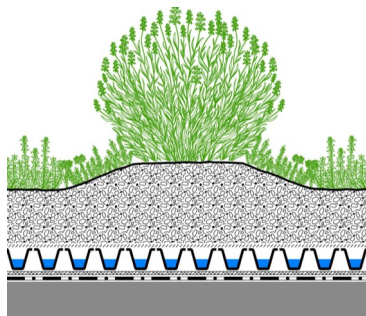
rate garden areas have been realised and planted with different grasses and perennials giving the terraces a special charm and a light and breezy ambience. Built-on-site seatwalls capped with floating cedar slats create natural gathering spaces on the roof, and integrated lighting provides an inviting ambience day or night.

## Development



Floradrain® FD 40-E was used as a permanent formwork for the curb and seatwalls.

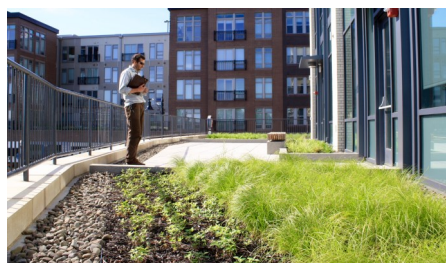
## System Build-up



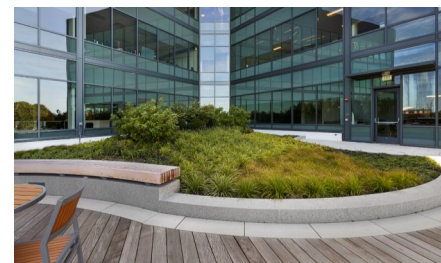
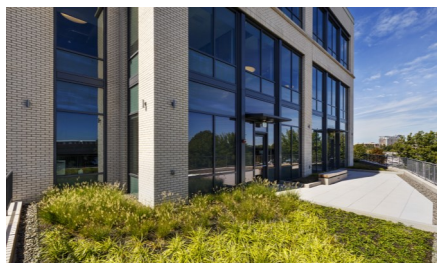
- Plant layer
- System Substrate "Heather with Lavender"
- Filter Sheet SF
- Floradrain® FD 40-E
- Protection Mat SSM 45
- Roof construction with root resistant waterproofing



Floradrain® FD 40-E is the core element of the vegetated areas providing the plants with an optimal water-/air balance.



The continuous layer of Floradrain® FD 40-E ensures a safe drainage of excess water under the elements to the roof drains.



The seatwalls capped with cedar slats are a perfect place for spontaneous meetings on roof

