



This photograph hardly reveals that this beautifully designed courtyard is located on a roof.

Project Data

Area: ca. 5.300 m²

Construction Year: 2013

Landscape architect:
Stantec Planning and Landscape
Architecture P.C., Boston

Contractor:
Xquisite Landscaping Inc., Stoughton

System Build-up:
"Driveway" with Stabilodrain® SD 30

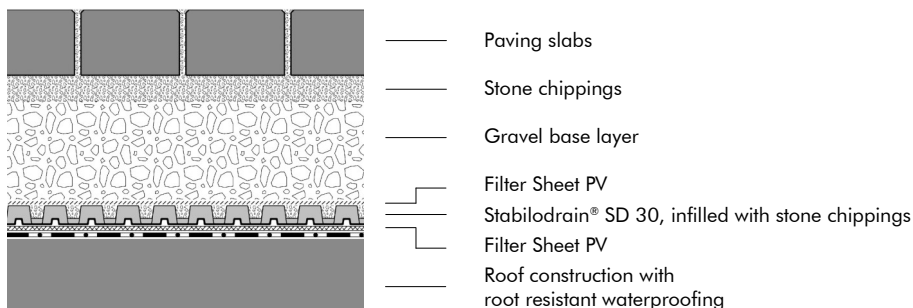
Coordinates:
42°21'39.93"N 71°8'16.67"W

Conception

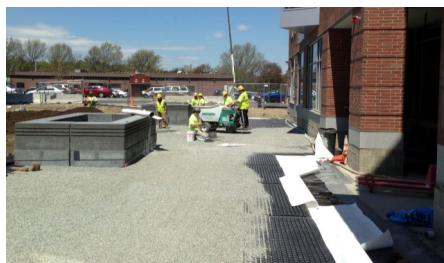
The new "Charlesview Residences" consist of a 340-unit-complex with residential units, shops and public areas such as a community center. Charlesview Inc., the building owner, was founded by several interdenominational churches in the early 1970s, and has been providing affordable housing for the needy in North Allston since decades. Already the nearby previous building was home to people of different cultures, religions and languages and thus contributed to

community and tolerance. 70 % of the buildings and exteriors of the about 8,000 m² large area were built on top of an underground parking garage accommodating up to 243 vehicles. The result was an impressive green roof area of more than 5,000 m². Both the walk- and driveways as well as the planted areas were implemented on the continuously laid drainage element Stabilodrain® SD 30. The project was awarded a LEED Silver certification.

System Build-up



Development



The drainage element Stabilodrain® SD 30 has been applied on the entire roof surface and completely filled with stone chippings.



The System Filter Sheet PV has been installed below and on top of Stabilodrain® SD 30.



The planting areas have been delimited from the remaining roof surface by low kerbs from one side and by benches from the other side.



The courtyard, that was designed by landscape architects, was very well received not only by the residents.



Only the garage entrance reveals that the courtyard is located on a roof surface.