

Project Report

Barbican Beech Gardens, London



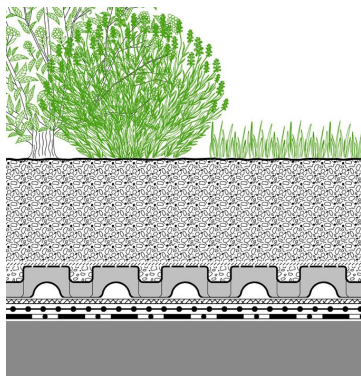
Beech Gardens as part of the Barbican Estate provide recreational green space in the City of London.

Conception

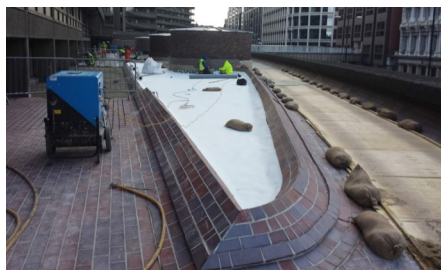
Beech Gardens, as part of the Barbican Estate in the City of London was laid out in the 1970 and required a refurbishment and replanting in 2015. Based on a new design concept the requirements to meet were the reduction of maintenance needs and the removal of the permanent irrigation system to decrease water consumption significantly. So the landscape architects opted for a naturalistic meadow-like flower-rich vegetation, however, robust and

drought-resistant enough to tolerate low water availability and requiring only little maintenance throughout the year. In addition, the long-proven ZinCo system build-up "Roof Garden" with FD 60 - thanks to its high water retention capacity - was the ideal solution to provide for a balanced water-air supply, to drain off excess water and at the same time store sufficient water given the absence of any additional irrigation.

System Build-up



- Vegetation such as meadows, perennials, shrubs and trees
- Intensive System Substrate, 200–900 mm
- Filter Sheet SF
- Floradrain® FD 60, filled with Zincolit® Plus
- Protection Mat ISM 50
- Root Barrier WSB 100-PO
- Roof construction with waterproofing



The original planting beds were first laid out with the ZinCo Root Barrier WSB 100-PO.



The drainage element Floradrain® FD 60 provides sufficient water retention capacity and made the old permanent irrigation system superfluous.

Project Data

Area: approx. 2.000 m²

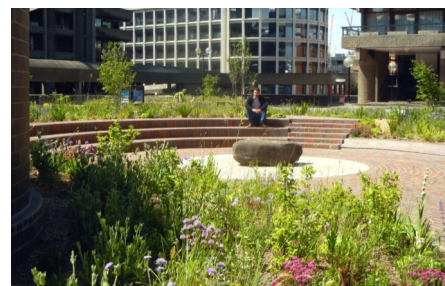
Year of refurbishment: 2015

Landscape Architect:
Nigel Dunnett, University of Sheffield
The Landscape Agency, York

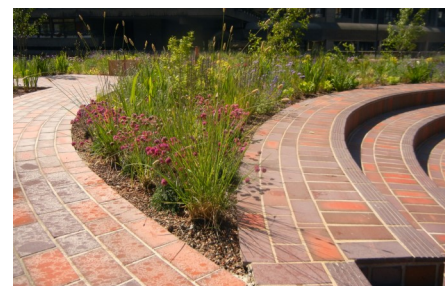
Contractor:
Pritchard & Pritchard Ltd., Richmond

System build-up:
"Roof Garden" with Floradrain® FD 60

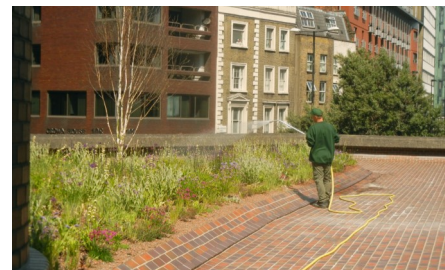
Coordinates:
51°31'14.06"N 0°5'47.52"W



A naturalistic meadow-like wildflower vegetation was chosen tolerating low water availability and requiring little maintenance throughout the year.



The planting beds were kept to the original layout, however, the vegetation was completely replaced on top of the newly laid out FD 60 build-up.



Additional hand irrigation is only required during the first year establishment phase.

ZinCo Green Roof Systems Ltd.

Wittas House · 2 Rivers Industrial Estate · Station Lane · Witney OX28 4BH · United Kingdom
Phone +44 (0)1993 229700 · Fax +44 (0) 2031 631915
office@zinco-greenroof.co.uk · www.zinco-greenroof.co.uk

Life on Roofs

