



The new development with landscaped gardens was built on top of the underground car park.

## Conception

The Chelsea Waterfront development is a refurbishment project on the 8-acre site of the former Lots Road Power Station in Chelsea, London, which was built in 1904 to power London's underground transport system.

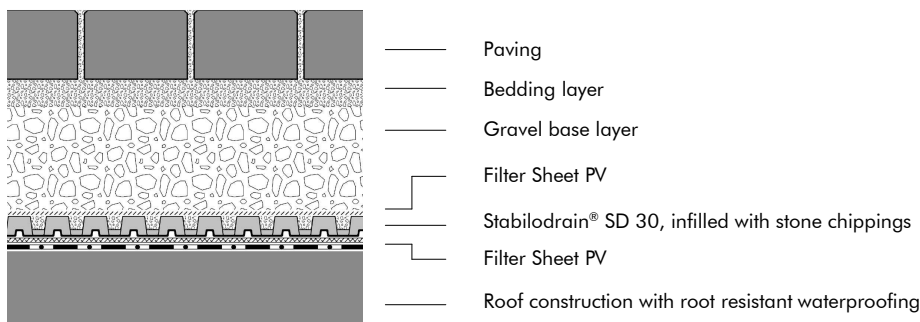
Chelsea Waterfront now comprises two new residential glass towers, 3 riverside buildings arranged around landscaped gardens and the refurbishment of the historic Lots Road Power Station building now combining highest quality luxury loft-style apartments with high-class restaurants, bars, cafes and boutique shops.

The landscaped gardens around the apartment buildings were built on top of the development's underground car park and required a podium build-up.

As driveways and emergency access roads were included in the landscape scheme, Stabilodrain® SD 30 was chosen as the core piece of the build-up. SD 30 is an extremely stable and high pressure resistant element and suitable for both soft and hard landscaping.

Only few of the planters with low-type vegetation were greened with the system build-up "Roof garden" with FD 40-E.

## System Build-up



Rear and front view of the new premium apartment buildings surrounded by hard and soft landscaping on top of the underground car park podium. The vegetation includes all forms of intensive greening from trees, shrubs and bushes to perennials and lawn.



### Project Data

Area: ca. 4,200 m<sup>2</sup>

Construction Year: 2017

Architect: Farrells, London

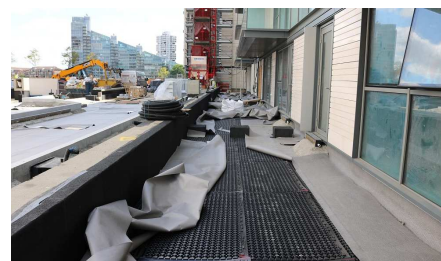
Landscape Architect: Randle Siddeley Associates, London

General Contractor: Ardmore Construction Ltd., London

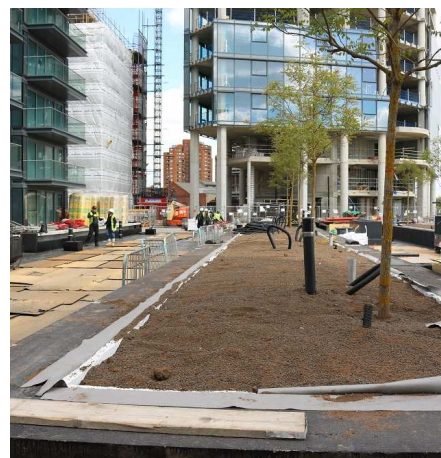
Landscape Contractor: Kingston Landscape Group Ltd., Twickenham

System build-up: "Roof Garden" with FD 40-E and "Walkways and Driveways on Podiums" with Stabilodrain® SD 30

Coordinates: 51°28'37.3"N 0°10'57.0"W



Stabilodrain® SD 30 was laid over the entire surface allowing for both hard and soft landscaping.



Stabilodrain® SD 30 allows trees to be grown on podiums in a relatively low substrate layer.



View over the gardens towards the river Thames and the buildings on the other side of the river.