

Installation Instructions for ZinCo Railing System SG 40-E



Generalities:

The Railing System SG 40-E (Order No. 9800) is a V2A stainless steel (quality 3401, grinding 240) guardrail solution which is easy to assemble without welding. It consists of a solid circular handrail (Order No. 9801) with a diameter of 40 mm and midrails (Order No. 9802) with a diameter of 12 mm made of solid material.

Note:

The Railing System SG 40-E does not prevent climbing, as it is equipped with horizontal midrails. Therefore, this railing system is particularly inadequate for areas which are accessible to children (danger of climbing over the railing).

Assembly of Railing Posts:

The railing posts are connected to the Guardrail Base GB (Order No. 3420) / GB-corner (Order No. 3445 resp. 3446) by means of a matching counter flange (see Figure 1).

The connection is to be established by means of screwing devices (M10 bolts, washers and locking nuts) made of steel (see Figure 2). A washer is to be positioned at the bottom side of each slot. The railing posts are to be positioned exactly perpendicular (e.g. using the practical ZinCo GB-washers Order No. 9817) and to be aligned properly.

Assembly of Handrail and Midrail(s):

The midrail supports (Order No. 9807) are to be pushed onto the midrail (see Figure 3). The exact spacing between the posts is to be considered. Each midrail support of a 3 m long midrail is then attached subsequently to the posts (see Figure 4) and fixed at the desired height with an allen screw (see Figure 5).

The midrail and handrail bars can be cut, if necessary, either with a hand saw or an angle grinder. It is important to deburr the sharp edges after cutting. When sawing and assembling the handrail / midrail(s) make sure not to scratch them.

Midrail resp. handrail bars can be attached to each other using corresponding couplings (Order No. 9809 resp. 9808). The couplings are to be pushed over the stainless steel pipes and glued using the enclosed metal adhesive, once the railing is aligned properly. In the corners the midrails and handrails are connected accordingly using corner joints (Order No. 9803 resp. 9805). Midrail and handrail pieces can be equipped with end caps made of stainless steel (Order No. 9811 resp. 9812), which can easily be attached and glued.

If the handrail ends at a wall it can be fixed there using a handrail end piece (Order No. 9804) (dowel screw Ø 12 mm).

Once all midrails are installed, the handrail pieces can be equipped with the corresponding supports (Order No. 9806) and attached to the railing posts. The handrail is brought to the desired height by means of the height adjustment (see Figures 6–10) and fixed afterwards. Use glue only when you are sure that the handrail / midrail(s) will not be demounted any more.

Finally, after a visual inspection, the screws of the railing system are to be checked again and tightened if necessary, furthermore the railing is to be cleaned.

In any case, check the stability of the railing once again!

Required Tools:

- Screw-wrench size 17.0
- Ratchet spanner size 17.0
- Allen screw (size 2.5 and size 3.0)
- Angle grinder
- Drilling machine with a 12 mm drill (only required in case of fixation to wall)

Installation Instructions for ZinCo Railing System SG 40-E

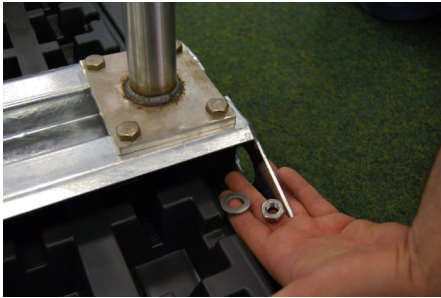


Fig. 1

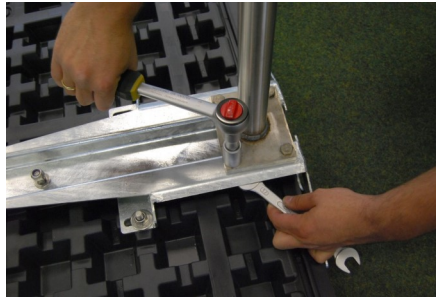


Fig. 2



Fig. 3

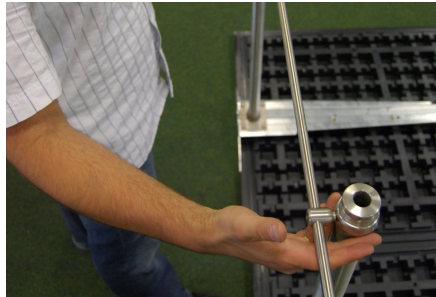


Fig. 4



Fig. 5



Fig. 6



Fig. 7



Fig. 8

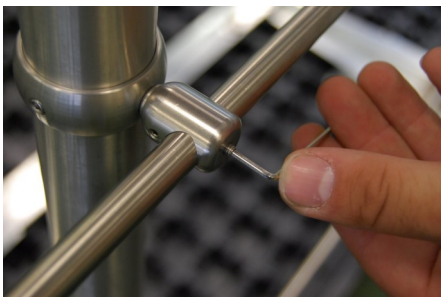


Fig. 9



Fig. 10

