



The huge mixed-use development at Wimbledon Grounds including vast 15,967 sqm area of 'blue' roofs and 'blue' podiums is one of the largest blue roofing projects in the UK.

## Project Data

Area: ca. 15,967 m<sup>2</sup>

Construction Year: 2020/2021

Developer: Galliard Homes, London

Roofing Contractor: Kingsley Roofing (London) Ltd.

Landscape Contractor: Pritchard & Pritchard Ltd., Richmond

System build-up:  
"Stormwater Management Roof" with RS 60 and RSX type spacer elements

Coordinates:  
51°25'59.7"N 0°11'04.3"W

## Conception

This large-scale development located on Plough Lane, Wimbledon, London is part of a 51,000 sqm regeneration master-plan for the brand new purpose-built stadium for AFC Wimbledon. The residential scheme surrounding the stadium comprises 600 homes as well as community, leisure and retail space. Every roof and podium in the Wimbledon Grounds residential complex is a 'blue' roof, which incorporates a sustainable drainage system (SuDS) to prevent flooding and pollution. The project includes four large blue podiums with landscaped

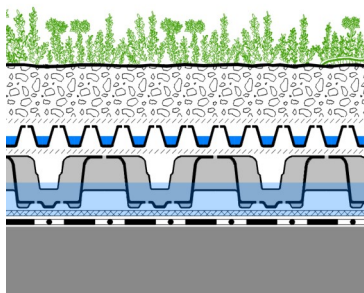
gardens situated for example over a car park or entrance hall and providing community space to the residents. In addition, the apartment block roofs have 26 blue roofs with a green roof installed on top. These are seeded with a bio-diverse mix of native wildflowers, sedum and grasses.

On all roofs the "Stormwater Management Roof" build-up came to use. While RS 60 spacers were installed as system core pieces on the blue/green roofs, heavy duty RSX spacer elements were used on the landscaped podiums.



The "Stormwater Management Roof" is made up of various layers, with the Retention Spacer (here RS 60) being the core piece of the build-up.

## System Build-up



Mix of wildflowers, sedum, and grasses

System Substrate "Extensive Green Roof"

Filter Sheet SF

Floradrain® FD 25-E

Filter Sheet PV

Retention Spacer RS 60

Filter Sheet PV

Roof construction with root resistant waterproofing



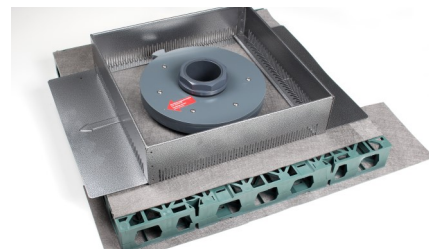
One of the podium decks during winter time shortly after installation.



The heavy duty RXS spacers were laid on all podiums allowing them to be used as roof gardens with hard and soft landscaping.



RS 60 retention spacers were used on all green roofs providing retention space below the wildflower/sedum build-up.



The flow controller is used to regulate the rain water run off within a pre-defined period of time.