

Project Report

Beaufort Park, Hendon, London 



Project Data

Area: approx. 1,190 m²

Construction year: 2016-2018

Developer: St George, Berkley Group, London

Contractor:
SJM Landscapes Ltd., Slinfold

System build-up: "Roof Garden" with Floradrain® FD 60 neo

Coordinates:
51°35'34.3"N 0°14'37.1"W

Beaufort Park is one of the UK's largest residential projects surrounded by eight acres of landscaped courtyards and parkland.

Conception

Beaufort Park, located in the North West of London, is a regeneration of the 25-acre former RAF Hendon Aerodrome into a new and exciting mixed use community. It's one of the largest residential developments in London comprising approx. 3,000 high quality flats and attractive penthouses. It also includes approx. 85,000 sqm of commercial, retail and F & B space surrounded by eight acres of landscaped courtyards and parkland. As many of the landscaped areas are built on podiums over underground

carparks, a podium build-up was required for landscaping. As it had to be suitable for a wide range of intensive greening the "Roof Garden" build-up with the drainage element Floradrain® FD 60 neo was chosen. With its high water storage capacity it provides sufficient water supply to the wide range of plants. In addition, it is perfectly suitable for the combination of soft and hard landscaping. It can even be filled with concrete for subconstructions for driveways or footings without affecting the drainage.

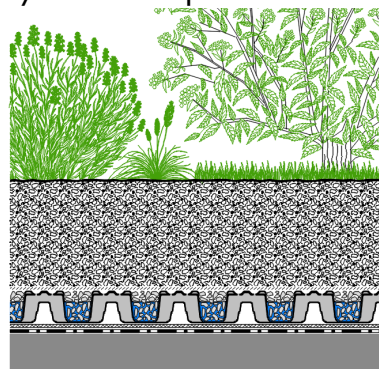


To install pergolas or other superstructures, Floradrain® FD 60 neo can be filled with concrete to provide the subconstructions or footings required.



There are seating areas for residents to rest and relax in all courtyards and gardens of Beaufort Park.

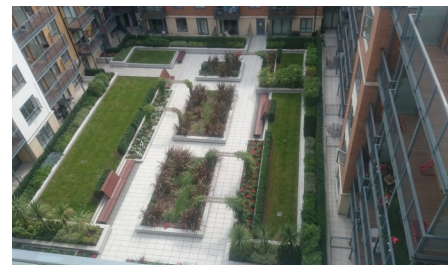
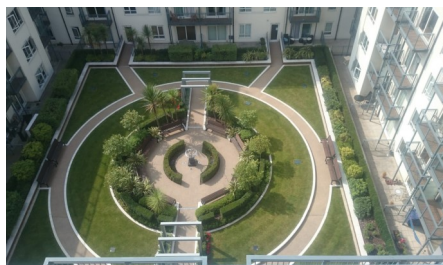
System Build-up



Vegetation such as lawn, perennials, shrubs and trees

System Substrate "Roof Garden"

Filter Sheet SF
Floradrain® FD 60, filled with Zincolit® Plus
Protection Mat ISM 50
Root Barrier WSB 100-PO
Roof construction with root resistant waterproofing



The variety of designs and layouts as well as the diversity of plants give each courtyard and building a special character. The roof garden build-up with Floradrain® FD 60 neo with its high water storage capacity is ideal for the wide range of plants from lawn and perennials to shrubs and trees, and the combination of hard and soft landscaping.

ZinCo Green Roof Systems Ltd.

Wittas House · 2 Rivers Industrial Estate · Station Lane · Witney OX28 4BH · United Kingdom
Phone +44 (0)1993 229700 · Fax +44 (0) 2031 631915
office@zinco-greenroof.co.uk · www.zinco-greenroof.co.uk



Life on Roofs