

Checklist for Solar Plants on Flat Roofs

Please send back to office@zinco-greenroof.co.uk

Object:

Street, house number:

Post code, city: Latitude: °

Height above sea level: m Photovoltaic plant Solar thermal heating plant

Planner:

Contact person:

Street, house number:

Postcode, city:

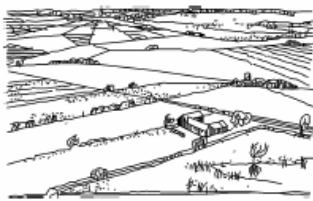
Telephone number:

Maximum admissible load on waterproofing:kg/m² (without traffic load and without snow)

Warm Roof

Cold Roof

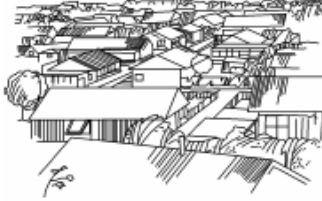
Inverted Roof



Area category 1
open, flat terrain without obstacles



Area category 2
terrain with hedges, single farms, houses or trees, e.g. agricultural regions



Area category 3
suburbs, industrial areas or business parks, woods



Area category 4
urban areas, at least 15% of area covered by buildings with an average height of more than 15 m

Location: Exposed Non-exposed

Wind zone 1 Wind zone 2 Wind zone 3 Wind zone 4

or wind speed in m/s:

- See page 2 -

Checklist for Solar Plants on Flat Roofs

Please send back to office@zinco-greenroof.co.uk

In which zone of the roof will the system be located?

- Field Perimeter Corner

Building dimensions (in metres) Length: Width: Height:

Roof dimensions (in metres) Length: Width: Perimeter:

Roof slope: ° or % Parapet height:

Desired greening system:

Mounting orientation: vertical

.....



Mounting orientation: horizontal

.....



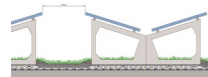
Mounting orientation: South

.....



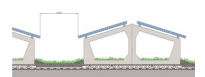
Mounting orientation: East-West "Butterfly"

.....



Mounting orientation: East-West "Saddle"

.....



Desired system size? kW_{peak} pieces of modules

Module/collector type: Size: x m

Inclination of the system: °

Required superimposed load according to module/collector manufacturer: kg/pce module/collector

On roofs with a height of more than 2 m suitable fall protection devices are required
(see local regulations on construction, trade associations, laws on occupational safety, etc.)

- protection devices are already installed
 protection devices are required along with the solar sub-construction

Remark:

- Roof top view if possible as DWG (or DXF) file, alternatively a PDF file including reference dimensions.

Further comments or requests:

.....

