

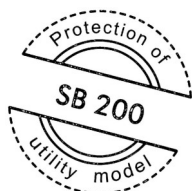
# Product Data Sheet

## Solar Base SB 200

Order No. 3460 / 3463 / 3465



The perfect sub-structure assembly for the installation of PV or thermal solar panels on flat roofs (up to 5° roof pitch).



### Technical Data

#### Solar Base SB 200

Order No. 3460

Complete assembly of sub-structure, for e.g. the Solar Base Frame SGR, made of recycled hard plastic with aluminium profile underneath the plastic element.

Material:	ABS
Height:	ca. 43 mm
Weight, incl. aluminium profile:	ca. 7 kg
Filling volume:	ca. 16 l/m <sup>2</sup>
Compressive strength at 10 % compression:	ca. 250 kN/m <sup>2</sup>
In-plane water flow capacity (EN ISO 12958):	
roof slope 1%:	ca. 1.6 l/(s·m)
roof slope 2%:	ca. 2.4 l/(s·m)
roof slope 3%:	ca. 3.0 l/(s·m)
Dimensions:	ca. 1.00 x 2.00 m

Stainless steel fixing elements, thread M 10.

further Solar Base boards:

ZinCo Solar Base SB 200-Q	(crosswise installation)	Order No. 3463
ZinCo Solar Base SB 200-4	(with 4 screws for east-west-installation)	Order No. 3465

### Features

- assembly without roof penetrations, green roof build-up used as superimposed load
- even load distribution
- lightweight components easy to transport
- drainage channels on the underside for optimal drainage
- completely pre-assembled base plate for quick and easy installation of support frame

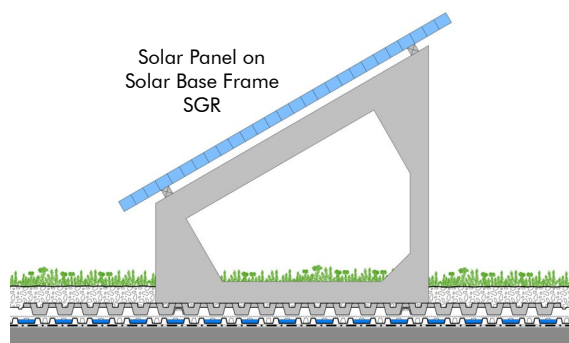
#### Notice:

During installation, the temperature of the material should be at least + 5 °C. The Solar Base SB 200 is installed on a protection layer and must be filled and covered completely with bulk material according to the ballast requirements. The installation instructions must be followed.

### Application Example

"System Build-up SolarVert®"

Plant layer "Sedum Carpet"  
System Substrate "Sedum Carpet"  
ZinCo Solar Base SB 200  
Fixodrain® XD 20



### Specification Suggestion

Solar Base of recycled hard plastic (ABS), dimensions ca. 1 m x 2 m, height ca. 43 mm, water storage cells and multidirectional drainage channels, incl. integrated aluminium profiles and structurally tested for combination with Solar Base Frame, in-plane water flow capacity

tested according to EN ISO 12958, delivery and installation according to manufacturer's instructions.

Make: ZinCo Solar Base SB 200  
Enquiries: ZinCo Green Roof Systems Ltd.  
Phone: +44 (0)1993 229 700